

FHO3000L Mini OTDR



FHO3000L mini OTDR is a multi-functional optical measuring instrument, which integrates auto OTDR, expert OTDR, Event map, optical power meter, visual fault locator, adjustable stable laser source, optical loss test, RJ45 cable length/sequence test, RJ45 cable digital tracker, flashlight. It has 5 inches touch screen and keys. It is the right assistant for optical cable construction, installation and maintenance, project acceptance and on-site repair.

Key features

- 1: Automatic OTDR: one click test without complex settings
- 2: Expert OTDR: professional measurement, curve, list and map are displayed at the same time
- 3: Fiber event map with Pass/Fail judgement, more intuitive and intelligent optical fiber link test
- 4: Twelve functions in one, smart mini multifunction OTDR
- 5: "Computer level" file management
- 6: 20hours ultra long standby time

90km

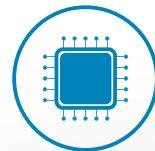
90km is measurable

2.5/8m

Small deadzone



Capacitive touch screen

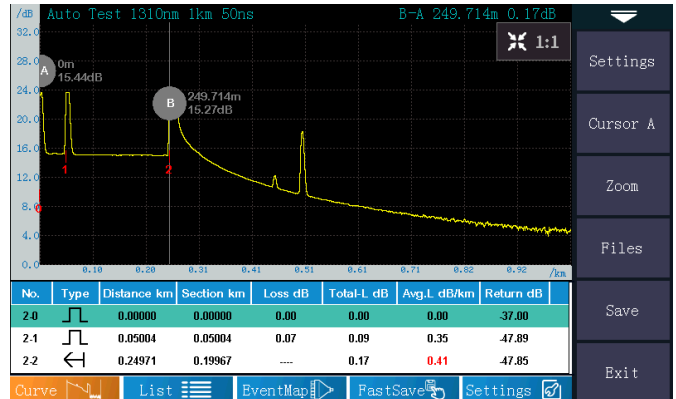
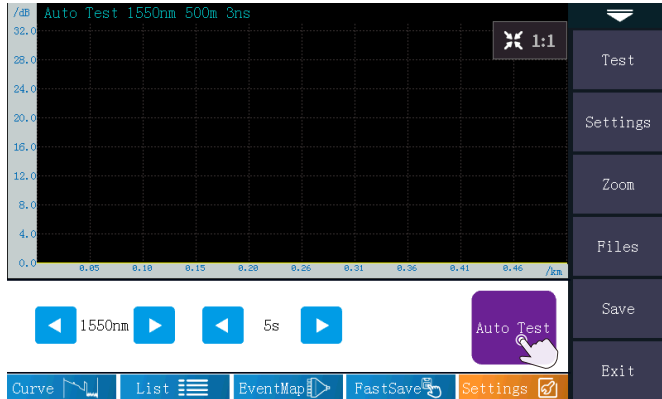


High performance CPU

Auto OTDR Test mode

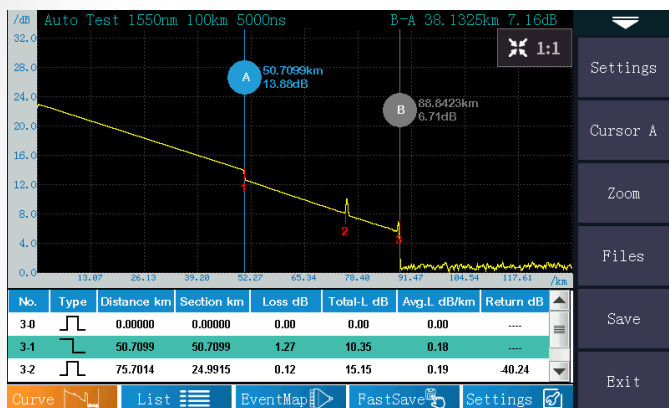
No need complex settings

Auto mode is for inexperienced testers, there is no need for complex parameter setting, one key automatic test and automatic analysis.



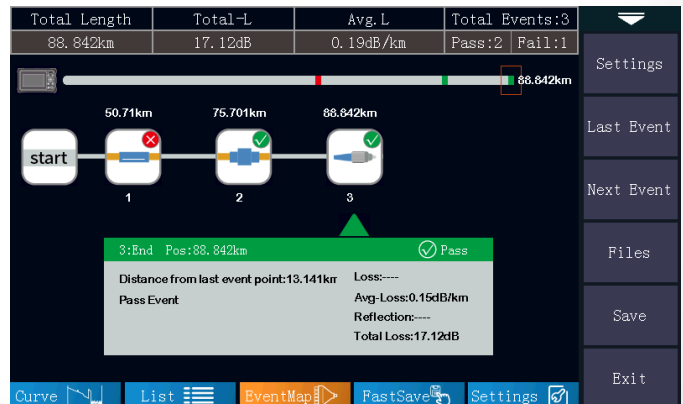
Professional Test mode: OTDR curve+ Event map

OTDR curve and event map can be displayed directly in one test. Whether you are a test expert or an inexperienced tester, you can easily analyze optical fiber links.



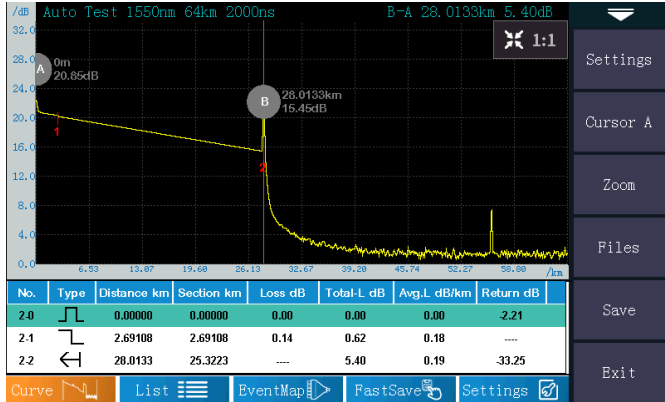
Automatically positioning fiber end point.

Automatically determine the Pass/Fail of the event according to the threshold.



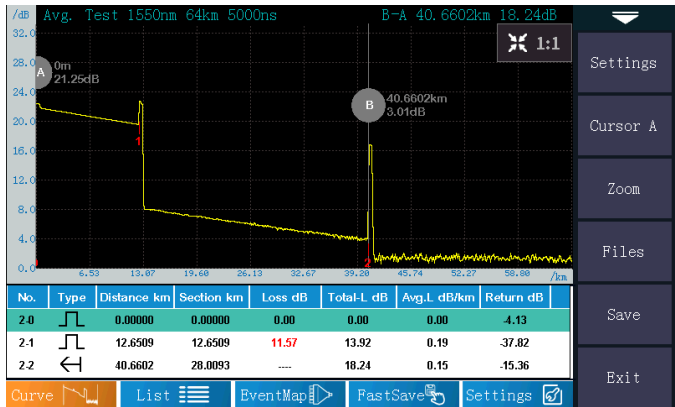
Professional test performance

High performance CPU with high precision algorithm provides accurate OTDR test curve and event list.



Fusion point with small loss can also be accurately identified.

26dB dynamic range can easily pass through the splitter with small deadzone. (maximum 1x32 splitter)



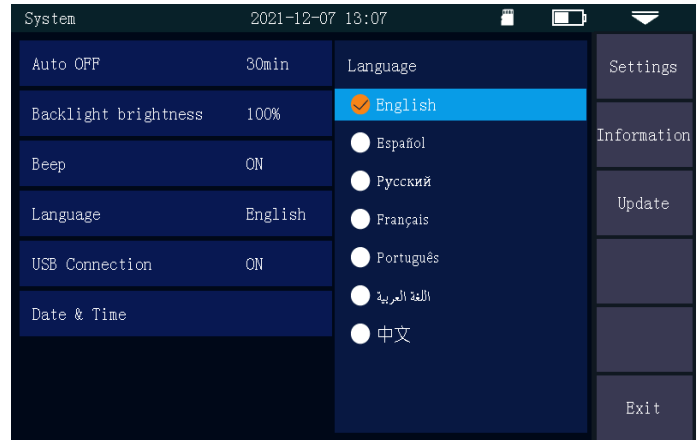
5-inch capacitive screen

Support screenshot and multi touch to zoom in, zoom out, move the curve/cursor.



Multi language optional

Equipped with multiple languages, suitable for operators in various countries



8GB Mass storage, automatic/manual file saving in SOR format

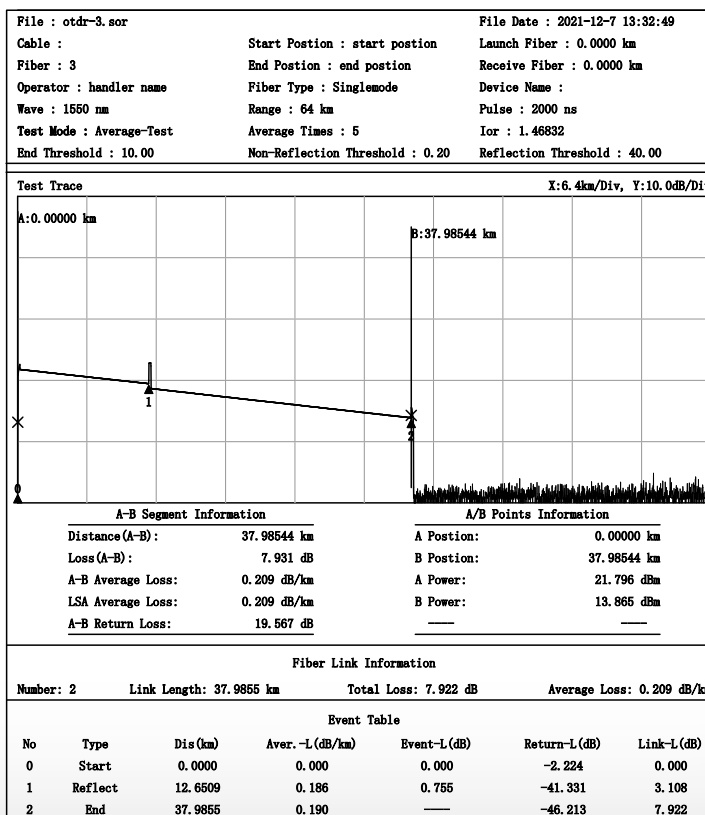
A variety of file naming methods, optical fiber number, optical cable location and operator can be set before testing.



Reports printing is simple and convenient

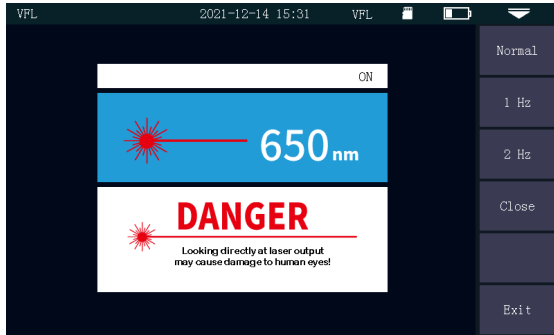
PC software is built-in the OTDR micro SD card, Connect PC to install software and export files.

Support batch printing of reports at a time, and PDF reports can be exported.

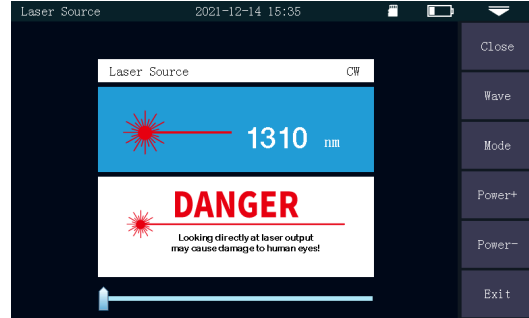


Multiple test functions

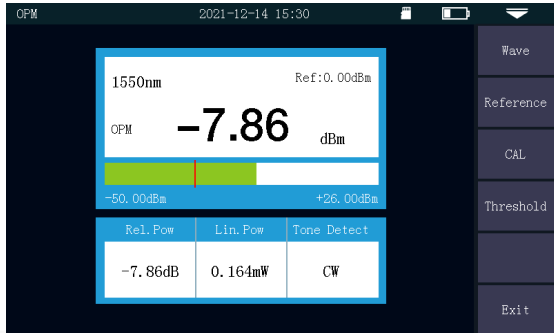
650nm 10mw VFL



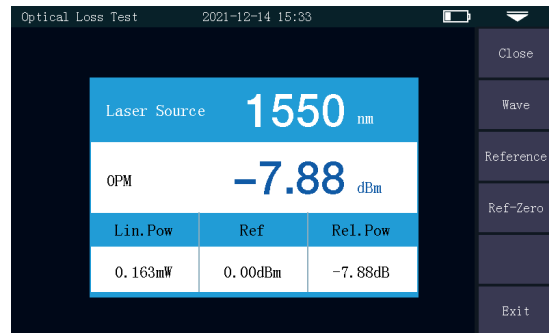
1310/1550nm Stable OLS



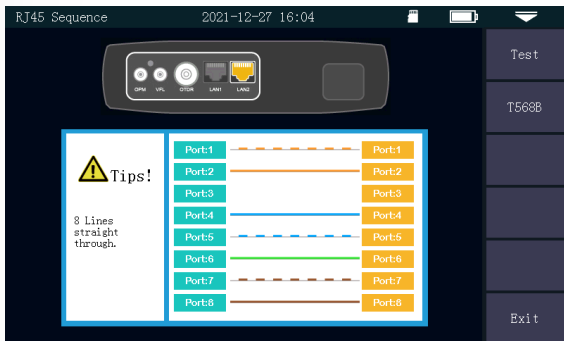
OPM



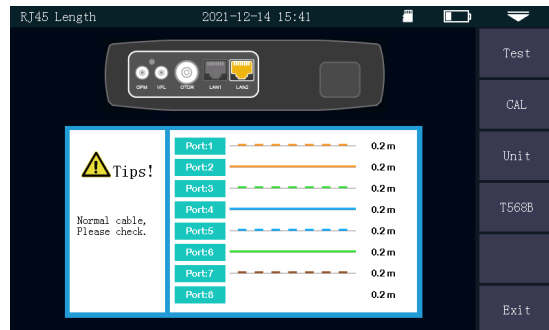
Optical loss test



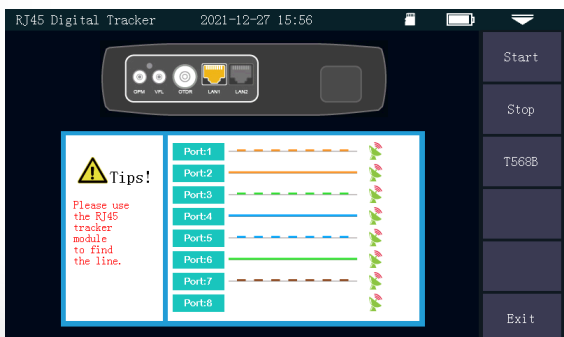
RJ45 cable sequence test



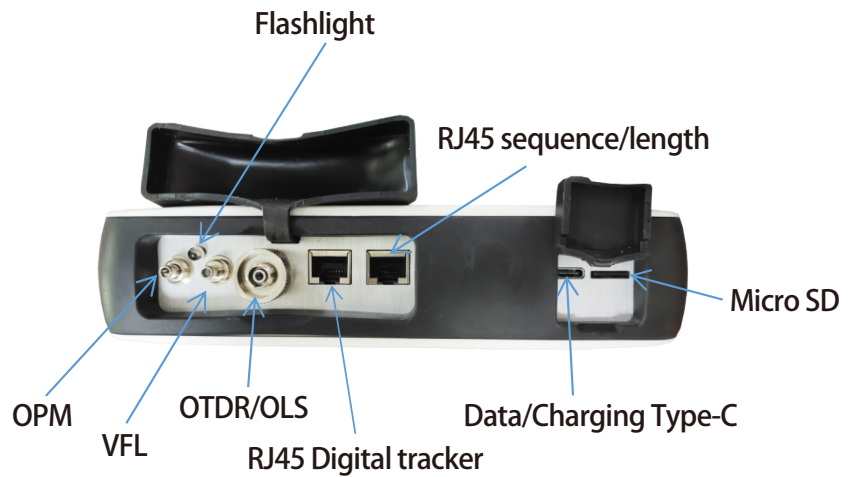
RJ45 cable length test



RJ45 cable digital tracker(Optional)



Appearance



Specifications:

| Items | Specifications |
|----------------------|--|
| Model | FHO3000L |
| Fiber type | G.652 SM fiber |
| Wavelength | 1310nm/1550nm |
| Dynamic Range | 26/24dB |
| Event deadzone | 2.5m |
| Attenuation deadzone | 8m |
| Test range | 3ns~20us |
| Pulse width | 500m/1km/2km/4km/8km/16km/32km/64km/100km |
| Distance accuracy | $\pm(1m+0.005\% \times \text{test distance} + \text{sampling resolution})$ |
| Linearity | $\pm 0.5\text{dB/dB}$ |
| Sampling points | 16k~128k |
| Sampling resolution | 0.05m~8m |
| Loss resolution | 0.001dB |
| Distance resolution | 0.001m |
| Loss threshold | 0.20dB |
| IOR setting | 1.00000~2.00000 |
| Reflectance accuracy | $\pm 3\text{dB}$ |
| File format | SOR standard file format |
| Loss test mode | 4-point/5-point method |
| Laser safety level | Class II |
| Optical port | FC/UPC (SC, ST is optional) |

| | |
|--|---|
| Refresh rate | 3Hz(Typ.) |
| OPM | |
| Working wavelength | 800nm~1700nm |
| Calibrated Wavelength | 850nm/980nm/1300nm/1310nm/1490nm/1550nm/1625nm/1650nm |
| Test range | -70~+10dBm/-50~+26dBm |
| Resolution | 0.01dB |
| Accuracy | ±5% |
| Frequency identification | CW/270/330/1k/2kHz(Use inner LS) |
| Optical port | Universal FC/SC/ST |
| Wavelength recognition | Support |
| VFL | |
| Wavelength | 650nm±20nm |
| Output power | ≥10mw |
| Mode | CW/1Hz/2Hz |
| Optical port | FC/UPC (Interchangeable SC/ST) |
| Laser safety level | Class III |
| OLS | |
| Wavelength | 1310nm/1550nm |
| Laser type | FP-LD |
| Power | ≥ -5dBm |
| Stability | CW, ±0.5dB/15 min(after 15min of preheating) |
| Optical port | FC/UPC (Interchangeable SC/ST) |
| Mode | CW/270Hz/330Hz/1kHz/2kHz |
| Optical loss test | |
| Wavelength | Consistent with LS |
| IL test | Support |
| RJ45 digital tracker (Optional) | |
| Mode | Digital tracking |
| Distance | ≤300m |
| Online/Line pair tracking | Support |

| RJ45 cable line sequence/length | |
|---------------------------------|--|
| Test distance | ≤300m |
| Others | |
| Display | 5 inches color capacitive touch screen |
| Data storage | 8GB TF card |
| Battery | 5000mAh lithium battery |
| Data/Charging interface | USB Type-C |
| Working temperature | -10°C~+55°C |
| Storage temperature | -40°C~+70°C |
| Humidity | 0~95% (No condensation) |
| Size | 195x140.5x46mm |
| Weight | 693g |

Standard Package

Main unit, SC connector, Charging adapter, Type-C cable, RJ45 remote module,
Strap, Quick guide, Calibration certificate

